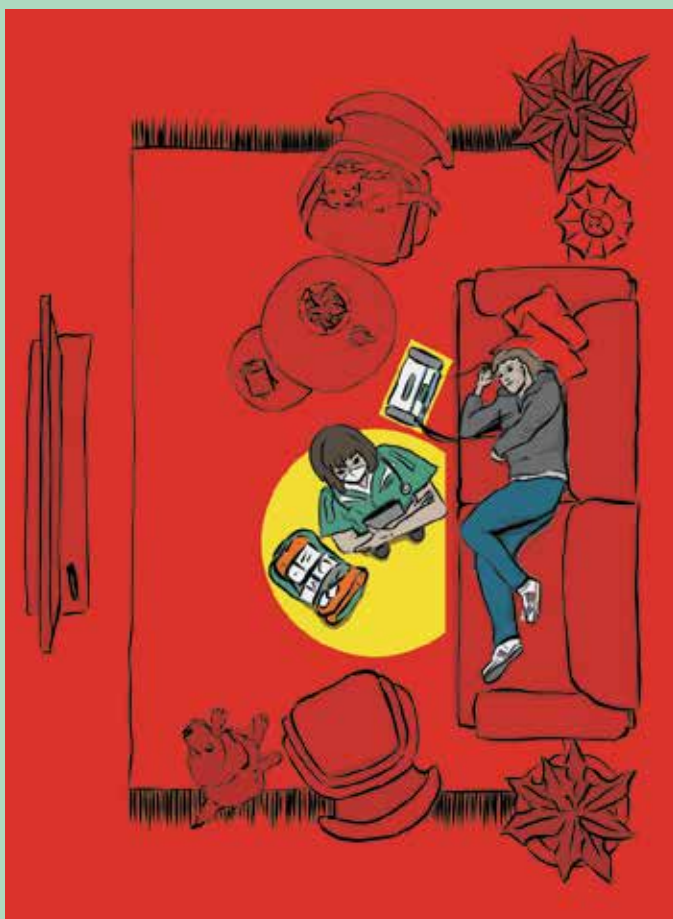


HAND HYGIENE ON SCENE OR PATIENT'S HOME

A patient's house, or the area they are located is considered a Patient Zone (red). Perform hand hygiene when entering these areas to protect patients from transmission of pathogens on your hands. After touching the Patient Zone, perform hand hygiene prior to touching any response kit equipment or defibrillator in order to reduce cross contamination to your Healthcare Worker Zone. Perform hand hygiene when leaving the Patient Zone to prepare for departure.



CLEAN HEALTHCARE WORKER ZONE

Conduct hand hygiene before entering a Clean Healthcare Worker Zone.

HEALTHCARE WORKER ZONE

Conduct hand hygiene before accessing clean equipment e.g. in overhead lockers and medication draws.

PATIENT ZONE

Conduct hand hygiene before and immediately after leaving the Patient Zone.